

GIVE WHERE YOU LIVE



Head of the Lakes
United Way

WHO WE ARE

Head of the Lakes United Way's (HLUW) mission is to strengthen our community by uniting people and resources.

For over 100 years, we've strived to live up to our mission by organizing volunteers, fundraising, and connecting people to the resources they need.

GREAT THINGS HAPPEN WHEN WE LIVE UNITED

Through our community-driven grant process, we provide funding for nearly **70 community programs**.

By working together with our community partners, volunteers, and donors like you, we can create a greater impact in our local communities.

HOW TO GIVE

- Payroll deduction
- One time gift
- Recurring donation
- Join our round-up program
- Organize a special event on behalf of HLUW

Learn more on our website
www.hlunitedway.org/donate



WORKPLACE CAMPAIGNS

Each year hundreds of local workplaces and thousands of individual donors participate in our community giving campaign. The more support we can get, the more support we can give to our community. Will you join us?

GIVE.
ADVOCATE.
VOLUNTEER.

\$25,408

Granted in Ashland
and Bayfield
Counties

\$731,737

Granted in Greater
Duluth Area

\$40,196

Granted in Lake and
Cook Counties

\$129,030

Granted in
Superior- Douglas
County

\$926,371

The total amount allocated to
community programs in our
local communities

WHY OUR COMMUNITY GIVES

"What's most fulfilling about donating to HLUW is that our donations go to work right here in the local community. You can stop by any of the many United Way funded organizations & see how your money is being spent. What you will find are dedicated, hard-working staff members empowering individuals to better their lives."

-FEN-TECH

When you donate

\$1

You help keep my
household's water
running in Ashland,
Wisconsin.

When you give

\$12

you cover the costs of
12 dental kits for kids
like me.

"United Way has a strong, storied history supporting those services which are most critical to our patients, and we are proud to partner with them in building a healthier, stronger community together."

-Lake Superior Community Health Center

OUR FOCUS AREAS



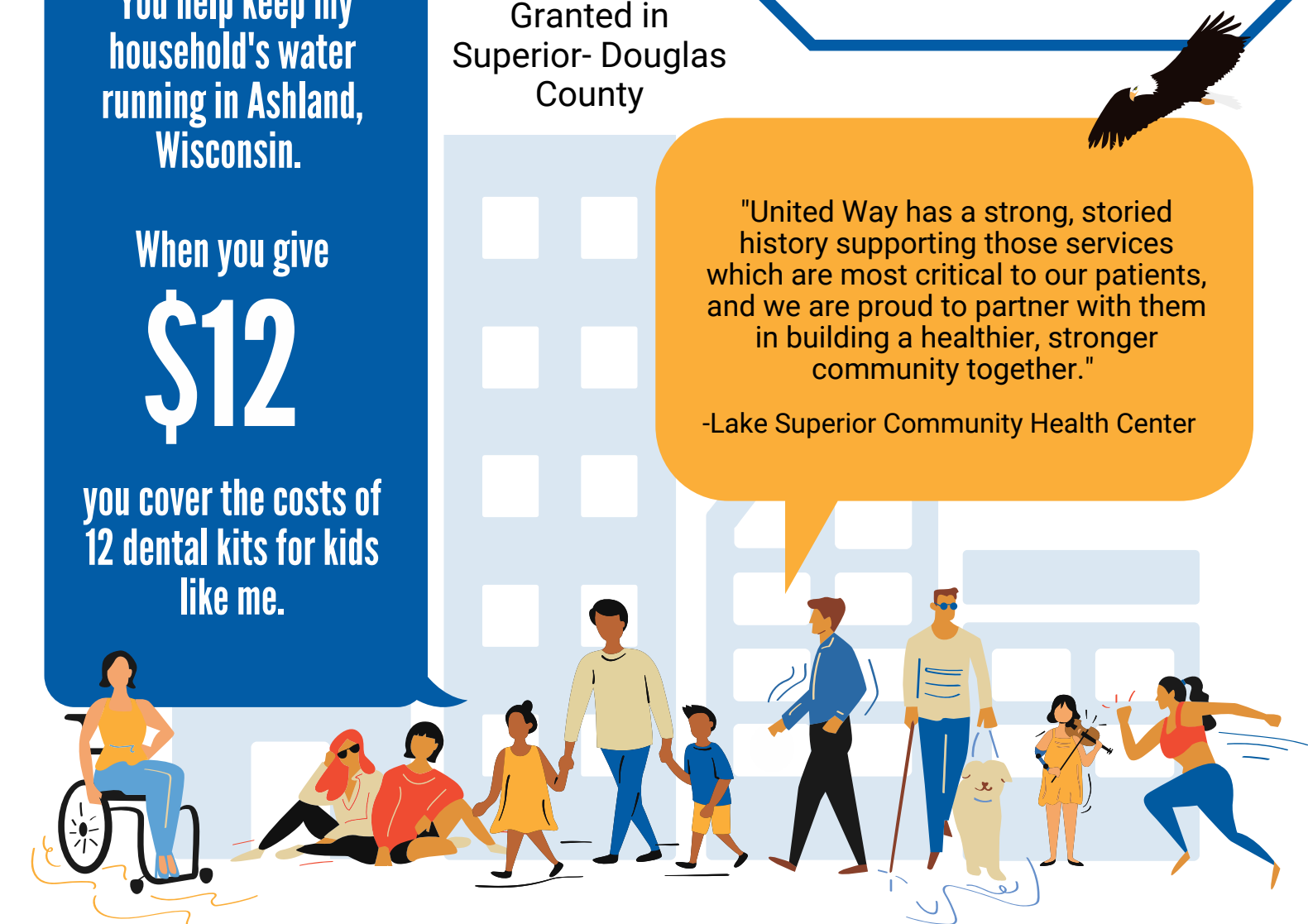
Health



Education



Financial Stability



HEAD OF THE LAKES UNITED WAY



OUR COMMUNITY PROGRAMS



United Way 2-1-1 is a FREE service offered 24/7 to anyone seeking information and referrals regarding local resources.

Community Services is a partnership between HLUW and organized labor that supports working families and strengthens our communities.



The HLUW Volunteer Center serves as a "one stop shop" for individuals and groups looking for a volunteer opportunity in our local communities.

Our Community Investment Process provides funding for nearly 70 community programs within the focus areas of health, education and financial stability.



WE HAVE ONE LIFE

TO LIVE BETTER, WE MUST LIVE UNITED

WHEN YOU GIVE LOCAL, IT STAYS LOCAL



Ashland and Bayfield Counties



Greater Duluth Area



Lake and Cook Counties



Superior-Douglas County

WE'RE STRIVING TO IMPROVE THE HEALTH, EDUCATION, AND FINANCIAL STABILITY OF EVERY PERSON IN EVERY COMMUNITY WE SERVE.



Head of the Lakes United Way

GROW WITH US



424 W Superior St STE 402, Duluth, MN 55802
(218) 726-4770 | www.hlunitedway.org